

BUILDING

PRO™

www.buildingpro.com

713-880-2801

Bill@buildingpro.com



**Modular
Buildings
for Sale**

Contact Bill

713-880-2801

www.buildingpro.com

Bill@buildingpro.com

BUILDING

PROTM

ADMINISTRATIVE BUILDING

General Specifications

- 28' x 60' modular building
- (2) 13' 8" x 60' (box sizes)
- 1,640 square feet
- Business Occupancy
- International Building Code
- Louisiana decal, 3rd party inspection
- Fire Marshal approvals
- Floor Load: 50#
- Wind Speed: 140 MPH
- Roof Load: 20#



Frame:

- (10) Brake axles, 6000#
- 12" Perimeter frame steel floor system with 8" cross members
- B deck
- Removable hitches

Floor:

- 3/4" Tongue & groove plywood sub floor
- R 19 Unfaced insulation
- Naturelle Luxury Vinyl Plank (10 yr. warranty)
- 6" Vinyl base molding in restrooms
- 4" Vinyl base molding in classrooms
- Standard bottom board

Walls:

- 2" x 4" x 9'3"; 9 foot finished ceiling height
- 210 Linear feet of interior walls
- Walls to underside of roof decking
- 5/8" x 4 x 12 Type X, tape & mud at factory; sand & paint on site
- 5/8" x 4 x 12 Type X moisture resistant gyp in restrooms, tape & mud at factory; sand & paint on site
- (10) 36 x 80 pre finished, Imperial Oak solid core (20 minute) doors in 18 gauge Rediframe
- (2) Best Grade 2 (73K) Privacy lever locks
- (2) Best Grade 2 (73K) Passage levers
- (6) Best Grade 2 (73K) Keyed levers
- (1) 18" x 18" Interior window, one way glass
- R-13 Kraft insulation
- R -11 Unfaced interior wall insulation
- Paint grade molding on windows

Roof:

- Transverse roof trusses, 16" on center, 23 foot span, no overhangs
- R-30 Unfaced insulation
- FR Class C 7/16" OSB roof decking
- 45 mil white EPDM roof with 12" rubber roof cap
- 2 x 4 T grid ceiling
- Tie Downs

Plumbing:

- (1) 4 Gallon water heater, wall mounted
- (2) ADA commodes, flush valve, grab bars at 36" AFF
- (2) Wall hung lavatories
- PEX supply piping with cut offs
- PVC waste piping, stubbed through the floor
- (2) Floor drains, 4" with trap primer
- (1) Wall mount hi/lo water cooler
- (1) Double stainless steel sink with gooseneck faucet
- (2) Frost proof hose bibbs
- (1) Mop sink, 24 x 24 with legs
- (2) Bobrick, toilet tissue dispensers, double roll, B 2888, stainless steel
- (2) Bobrick paper towel dispensers, B -262, stainless steel
- (2) Bobrick liquid soap dispenser, B-2111, stainless steel
- (2) Bobrick, 18 x 30 stainless steel framed mirrors, Bl66
- (1) Ice maker box hook up

Cabinets:

- 15 Linear Feet, Wilsonart brand base cabinets, 34" high with drawers; roll formed counter tops
- 15 Linear Feet of overhead cabinets

Electrical:

- (2) 150 AMP load centers, single phase
- A/C cable raceway
- (19) T-grid fluorescent lights
- (2) Lighted EXIT signs with battery back-up
- (2) Exit/Emergency light combo with battery back up
- (2) Lithonia MH wall pack exterior lights
- Standard receptacles and switches
- (5) GFI
- (20) Wall mounted J boxes with 1/2" stub into ceiling cavity
- (1) 110-V exterior weather proof receptacles in use
- (1) 110-V dedicated receptacle

HVAC:

- (2) 3 Ton wall mounted Bard units with 10kw heat, R410A
- (2) Programmable thermostats, Heat/Cool/Auto in locking T-stat cover
- Ceiling supply and return air ducted
- (2) Power vents, V-2262 ceiling fan
- Exterior duct chase wall

Exterior:

- Dow house wrap
- 5/8" CDX sheathing
- 8" Sierra Hardipanel siding with battens over seams
- 3/4" Hardi trim, 12" top & bottom, 8" at mansard and bottom of building, 4" trim around windows and doors
- 36" False mansard
- (8) 36" x 80" Vertical slide windows, in white aluminum frame with clear insulated glass, DP 55.
- (8) 1" aluminum mini blinds
- (2) 36 x 80 Steel doors in steel jamb with 6 x 27 wire mesh view block, closer
- (2) Panic hardware, Hager 4701 with exterior pull and Best Cylinder

Misc:

- (1) Fire extinguisher cabinet with 10# ABC fire extinguisher



Contact Bill

713-880-2801

www.buildingpro.com

Bill@buildingpro.com

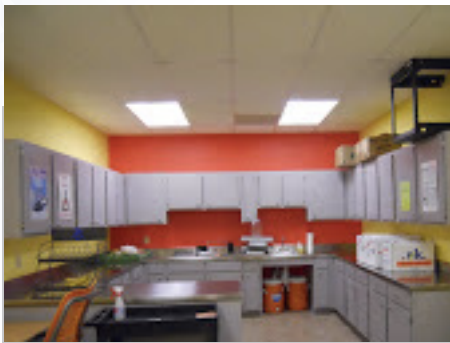
BUILDING

PRO™

CAFETERIA

General Specifications

- 56' x 68' modular building
- (4) 13' 8" x 68' (box sizes)
- 3,718 square feet
- Assembly Occupancy
- International Building Code
- Louisiana decal, 3rd party inspection
- Fire Marshal approvals
- Floor Load: 50#
- Wind Speed: 140 MPH
- Roof Load: 20#



Frame:

- (20) Brake axles, 6000#
- 12" Perimeter frame steel floor system with 8" cross members
- B deck
- Removable hitches

Floor:

- 3/4" Tongue & groove plywood sub floor
- R 19 Unfaced insulation
- Naturelle Luxury Vinyl Plank (10 yr. warranty)
- 6" Vinyl base molding in restrooms
- 4" Vinyl base molding in classrooms
- Standard bottom board

Walls:

- 2" x 4" x 9'3": 9 foot finished ceiling height
- 135 Linear feet of interior walls
- Walls to underside of roof decking
- 5/8" x 4 x 12 Type X, tape & mud in factory; sand & paint on site
- 5/8" x 4 x 12 Type X moisture resistant gyp in restrooms
- (4) 36 x 80 pre finished, Imperial Oak solid core (20 minute) doors in 18 gauge Rediframe
- (1) 72 x 80 pre finished, Imperial Oak, solid core (60 min) doors in 18 ga Rediframe
- (6) Standard Dorma 641 PA door closers
- (2) Push-Pull interior locks, latching with closer
- (3) Best Grade 2 (73K) Keyed levers
- R-13 Kraft insulation
- R -11 Unfaced interior wall insulation
- Paint grade molding on windows

Roof:

- Transverse roof trusses, 2 x 8, 16" on center, 48 foot span, no overhangs
- R-30 Unfaced insulation
- FR Class C 7/16" OSB roof decking
- 45 mil white EPDM roof with 12" rubber roof cap
- 2 x 4 T grid ceiling
- Tie Downs

Plumbing:

- (1) 40 Gallon electric water heater
- (6) Standard elongated flush valve commodes
- (2) ADA commodes, flush valve, grab bars at 36" AFF
- (6) Standard stall, solid phenolic modesty partitions
- (2) ADA stalls, solid phenolic modesty partitions
- (6) Wall hung lavatories
- PEX supply piping with cut offs
- PVC waste piping, stubbed through the floor
- (2) Floor drains, 4" with trap primer
- (1) Wall mount hi/lo water cooler
- (1) 3-compartment stainless steel sink
- (1) 22" x 25" single stainless steel handwash sink
- (2) Frost proof hose hibbs
- (1) Mop sink, 24 x 24 with legs
- (8) Bobrick, toilet tissue dispensers, double roll, B 2888, stainless steel
- (4) Bobrick paper towel dispensers, B -262, stainless steel
- (6) Bobrick liquid soap dispenser, B-2111, stainless steel
- (6) Bobrick, 18 x 30 stainless steel framed mirrors, B 166

Cabinets:

- 42 Linear Feet, Wilsonart brand base cabinets, 34" high with drawers;
- 42 Linear Feet of stainless steel counter tops, 24" deep NSF with rolled edges
- 42 Linear Feet of overhead cabinets

Electrical:

- (4) 150 AMP load centers, single phase
- A/C cable raceway
- (47) T-grid fluorescent lights
- (3) Exit/Emergency light combo with battery back up
- (2) Xr-5 emergency pack lights with 2 remote heads
- (6) Lithonia MH wall pack exterior lights
- Standard receptacles and switches
- (12) GFI
- (15) Wall mounted J boxes with 1/2" stub into ceiling cavity
- (5) Reinforced ceiling J boxes
- (2) 110-V exterior weather proof receptacles in use
- (1) 110-V dedicated receptacle

HVAC:

- (4) CRV-Commercial or classroom ventilators
- (4) 3 Ton wall mounted Bard units with 10kw heat, R410A

- (4) Programmable thermostats, Heat/Cool/Auto in locking T-stat cover
- Ceiling supply and return air ducted
- (5) Power vents, Broan #505 ceiling fan, 8" vertical discharge, 189 CFM, 6.5 sones
- Exterior duct chase wall

Exterior:

- Dow house wrap
- 5/8" CDX sheathing
- 8" Sierra Hardipanel siding with battens over seams
- 3/4" Hardi trim
- 36" False mansard
- (6) 36" x 80" Vertical slide windows, in white aluminum frame with clear insulated glass, DP 55.
- (6) 1" aluminum mini blinds
- (3) 72 x 80 double steel doors in steel jamb with 22 x 27 wire mesh view blocks, closers
- (3) Removable mullion (use on double doors with rim panic devices)
- (6) Panic hardware, Hager 4701 with exterior pull and Best Cylinder

Misc:

- (3) Fire extinguisher cabinets with 10# ABC fire extinguisher

Kitchen Equipment:

- Cut sheets attached
- True T-49F Freezer
- True T-49 Refrigerator
- True TMC-49 Milk cooler
- Atlas Metal, Mobile Hot Serving Unit, BLH-4
- Atlas Metal, Mobile Cold Serving Unit, BLC-4-RM
- (2) Atlas Metal Sneeze Guard, Protector Case
- Win-Holt Dunnage Rack DASQ-4-1224

Contact Bill

713-880-2801

www.buildingpro.com

Bill@buildingpro.com

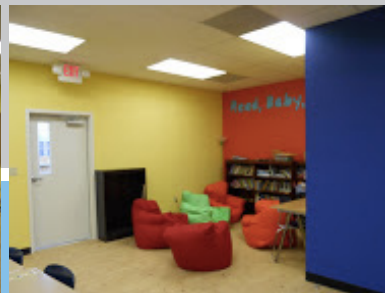
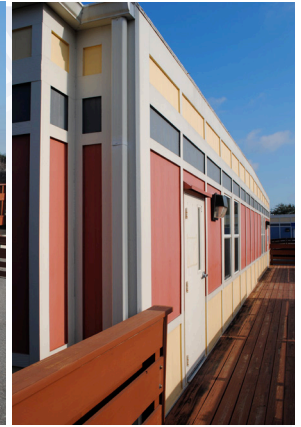
BUILDING

PRO™

CLASSROOM #1

General Specifications

One 28' x 60' modular classroom building
(2) 13' 8" x 60' (box sizes)
1,640 square feet
Educational Occupancy
International Building Code
Louisiana decal, 3rd party inspection
Fire Marshal approvals
Floor Load: 50#
Wind Speed: 140 MPH
Roof Load: 20#



Frame:

(10) Brake axles, 6000#
12" Perimeter frame steel floor system with
8" cross members
B deck
Removable hitches

Floor:

3/4" Tongue & groove plywood sub floor
R 19 Unfaced insulation
Naturelle Luxury Vinyl Plank (10 yr. warranty)
6" Vinyl base molding in restrooms
4" Vinyl base molding in classrooms
Standard bottom board

Walls:

2" x 4" x 9'3"; 9 foot finished ceiling height
85 Linear feet of interior walls
Walls to underside of roof decking
5/8" x 4 x 12 Type X, tape & mud in factory, sand & paint on site
5/8" x 4 x 12 Type X moisture resistant in restrooms, tape & mud in factory, sand & paint on site
(4) 36 x 80 pre finished, Imperial Oak solid core (20 minute) doors in 18 gauge Redifram
(2) Best Grade 2 (73K) Privacy lever locks
(2) Best Grade 2 (73K) Passage levers
R-13 Kraft insulation
R-11 Unfaced interior wall insulation
Paint grade molding on windows

Roof:

Transverse roof trusses, 16" on center, 23 foot span, no overhangs
R-30 Unfaced insulation
FR Class C 7/16" OSB roof decking
45 mil white EPDM roof with 12" rubber roof cap
2 x 4 T grid ceiling
Tie Downs

Plumbing:

(1) 4 gallon electric water heater, wall mounted
(2) ADA commodes, flush valve, grab bars at 36" AFF
(2) Wall hung lavatories (child height in K classroom building)
PEX supply piping with cut offs
PVC waste piping, stubbed through the floor
(2) Floor drains, 4" with trap primer
(1) 22" x 25" Stainless steel sink with wrist blade faucet
(1) Wall mount hi/lo water cooler
(2) Frost proof exterior hose hibbs
(1) Mop sink, 24 x 24 with legs
(2) Bobrick, toilet tissue dispensers, double roll, B 2888, stainless steel
(2) Bobrick paper towel dispensers, B-262, stainless steel
(2) Bobrick liquid soap dispenser, B-2111, stainless steel
(2) Bobrick, 18 x 30 stainless steel framed mirrors, B 166

Cabinets:

12' Wilsonart brand, base cabinets and doors with sink (spec above), Wilsonart counter roll tops
12' Wilsonart overhead cabinets

Electrical:

(1) 200 AMP load centers, single phase
A/C cable raceway
(23) T-grid fluorescent lights
(4) Exit/Emergency light combo with battery back up
(4) Porch lights, Lithonia MH wall packs
Standard receptacles and switches
(6) GFI
(15) Wall mounted J boxes with 1/2" stub into ceiling cavity
(2) Reinforced ceiling mounted J boxes
(1) 110-V exterior weather proof receptacles in use

HVAC:

(2) CRV-Commercial or Classroom Ventilator (0-50% outside air)
(2) 3 Ton wall mounted Bard units with 10kw heat, R410A
(2) Programmable thermostats, Heat/Cool/Auto in locking T-stat cover
Ceiling supply and return air ducted
(4) Power vents, V-2262 ceiling fan
Exterior duct chase wall

Exterior:

Dow house wrap
5/8" CDX sheathing
8" Sierra Hardipanel siding with battens over seams
3/4" Hardi trim, 12" top & bottom trim, 8" trim at mansard and bottom, 4" trim around windows & doors
36" False mansard
(6) 36" x 80" Vertical slide windows, in white aluminum frame with clear insulated glass, DP 55.
(6) 1" aluminum mini blinds
(4) 36 x 80 Steel doors in steel jamb with 6 x 27 wire mesh view block, closers
(4) Exterior lever locks, Best 73K Classroom Grade 2

Misc:

(2) Fire extinguisher cabinets with 10# ABC fire extinguisher

Contact Bill

713-880-2801

www.buildingpro.com

Bill@buildingpro.com

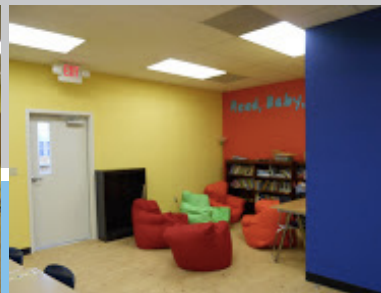
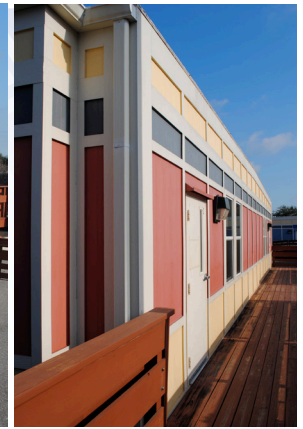
BUILDING

PRO™

CLASSROOM #2

General Specifications

- One 28' x 60' modular classroom building
- (2) 13' 8" x 60' (box sizes)
- 1,640 square feet
- Educational Occupancy
- International Building Code
- Louisiana decal, 3rd party inspection
- Fire Marshal approvals
- Floor Load: 50#
- Wind Speed: 140 MPH
- Roof Load: 20#



Frame:

- (10) Brake axles, 6000#
- 12" Perimeter frame steel floor system with 8" cross members
- B deck
- Removable hitches

Floor:

- 3/4" Tongue & groove plywood sub floor
- R 19 Unfaced insulation
- Naturelle Luxury Vinyl Plank (10 yr. warranty)
- 6" Vinyl base molding in restrooms
- 4" Vinyl base molding in classrooms
- Standard bottom board

Walls:

- 2" x 4" x 9'3"; 9 foot finished ceiling height
- 85 Linear feet of interior walls
- Walls to underside of roof decking
- 5/8" x 4 x 12 Type X, tape & mud in factory, sand & paint on site
- 5/8" x 4 x 12 Type X moisture resistant in restrooms, tape & mud in factory, sand & paint on site
- (4) 36 x 80 pre finished, Imperial Oak solid core (20 minute) doors in 18 gauge Rediframe
- (2) Best Grade 2 (73K) Privacy lever locks
- (2) Best Grade 2 (73K) Passage levers
- R-13 Kraft insulation
- R-11 Unfaced interior wall insulation
- Paint grade molding on windows

Roof:

- Transverse roof trusses, 16" on center, 23 foot span, no overhangs
- R-30 Unfaced insulation
- FR Class C 7/16" OSB roof decking
- 45 mil white EPDM roof with 12" rubber roof cap
- 2 x 4 T grid ceiling
- Tie Downs

Plumbing:

- (1) 4 gallon electric water heater, wall mounted
 - (2) ADA commodes, flush valve, grab bars at 36" AFF
 - (2) Wall hung lavatories (child height in K classroom building)
 - PEX supply piping with cut offs
 - PVC waste piping, stubbed through the floor
 - (2) Floor drains, 4" with trap primer
 - (1) 22" x 25" Stainless steel sink with wrist blade faucet
 - (1) Wall mount hi/lo water cooler
 - (2) Frost proof exterior hose hibbs
 - (1) Mop sink, 24 x 24 with legs
 - (2) Bobrick, toilet tissue dispensers, double roll, B 2888, stainless steel
 - (2) Bobrick paper towel dispensers, B-262, stainless steel
 - (2) Bobrick liquid soap dispenser, B-2111, stainless steel
 - (2) Bobrick, 18 x 30 stainless steel framed mirrors, B 166
- ### Cabinets:
- 12' Wilsonart brand, base cabinets and doors with sink (spec above), Wilsonart counter roll tops
 - 12' Wilsonart overhead cabinets

Electrical:

- (1) 200 AMP load centers, single phase
- A/C cable raceway
- (23) T-grid fluorescent lights
- (4) Exit/Emergency light combo with battery back up
- (4) Porch lights, Lithonia MH wall packs
- Standard receptacles and switches
- (6) GFI
- (15) Wall mounted J boxes with 1/2" stub into ceiling cavity
- (2) Reinforced ceiling mounted J boxes
- (1) 110-V exterior weather proof receptacles in use

HVAC:

- (2) CRV-Commercial or Classroom Ventilator (0-50% outside air)
- (2) 3 Ton wall mounted Bard units with 10kw heat, R410A
- (2) Programmable thermostats, Heat/Cool/Auto in locking T-stat cover
- Ceiling supply and return air ducted
- (4) Power vents, V-2262 ceiling fan
- Exterior duct chase wall

Exterior:

- Dow house wrap
- 5/8" CDX sheathing
- 8" Sierra Hardipanel siding with battens over seams
- 3/4" Hardi trim, 12" top & bottom trim, 8" trim at mansard and bottom, 4" trim around windows & doors
- 36" False mansard
- (6) 36" x 80" Vertical slide windows, in white aluminum frame with clear insulated glass, DP 55.
- (6) 1" aluminum mini blinds
- (4) 36 x 80 Steel doors in steel jamb with 6 x 27 wire mesh view block, closers
- (4) Exterior lever locks, Best 73K Classroom Grade 2

Misc:

- (2) Fire extinguisher cabinets with 10# ABC fire extinguisher

Contact Bill

713-880-2801

www.buildingpro.com

Bill@buildingpro.com

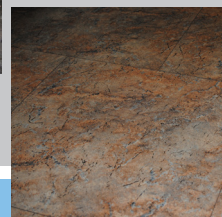
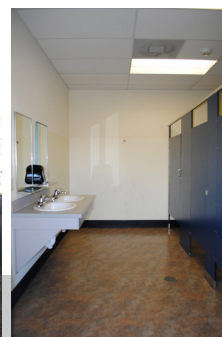
BUILDING

PRO™

LARGE CLASSROOM - 4PLEX

General Specifications

One 30' x 132' modular multi-classroom building
(2) 15' x 72' and (2) 15' x 60' units
3,960 square feet
Educational Occupancy
International Building Code
Louisiana decal, 3rd party inspection
Fire Marshal approvals
Floor Load: 50#
Wind Speed: 140 MPH
Roof Load: 20#



Frame:

(28) Brake axles, 6000#
12" Perimeter frame steel floor system with
8" cross members
B deck
Removable extended hitches

Floor:

3/4" Tongue & groove plywood sub floor
R 19 Unfaced insulation
Naturelle Luxury Vinyl Plank (10 yr. warranty)
6" Vinyl base molding in restrooms
4" Vinyl base molding in classrooms
Standard bottom board

Walls:

2" x 4" x 9'3"; 9 foot finished ceiling height
300 Linear feet of interior walls
Walls to underside of roof decking
5/8" x 4 x 12 Type X; raw from factory, tape/mud/
sand & paint on site
5/8" x 4 x 12 Type X moisture resistant in
restrooms; finish on site
(8) 36 x 80 pre finished, Imperial Oak solid core
(20 minute) doors in 18 gauge Rediframe
(8) Door closers, 641 PA
(6) Best Grade 2 (73K) Keyed levers
(2) Push-pull hardware for multi restrooms
R-13 Kraft insulation

Roof:

Transverse roof trusses, 2 x 8 @ 16" on center,
32 foot span, no overhangs
R-30 Unfaced insulation
FR Class C 7/16" OSB roof decking
45 mil white EPDM roof with 12" rubber roof cap
2 x 4 T grid ceiling
Tie Downs
Roof drain assembly with exposed downspouts

Plumbing:

(1) 4 gallon electric water heater
(2) ADA commodes, flush valve, grab bars at 36" AFF
(8) Standard elongated commodes
(2) Metal modesty partitions, ADA
(8) Metal modesty p.artitions, standard
(4) Vanity ADA lavatories with 19 x 17 drop in sink
Copper supply piping with cutoffs, minimum 1" supply
PVC waste piping, stubbed through the floor with
each fixture to have its own VTR
(3) Floor drains, 4" with trap primer
(1) Wall mounted hi/lo water cooler
(1) Terrazzo 24 x 24 x 8 floor mounted mop sink
(10) Bobrick, toilet tissue dispensers, double roll,
B 2888, stainless steel
(2) Bobrick paper towel dispensers, B-262,
stainless steel
(2) Bobrick liquid soap dispenser, B-2111, stainless steel
(4) Bobrick, 18 x 30 stainless steel framed mirrors, B166
(2) Frost proof hose bibs

Cabinets:

None

Electrical:

(4) 150 AMP load centers, single phase
A/C cable raceway
(65) T-grid fluorescent lights
(7) Exit/emergency light combos with batter back
up (LED)
(5) Xr-5 emergency pack lights with 2 remote heads
(12) Porch lights, Lithonia MH 120 watt with
photocell wall packs
20 amp specialty grade receptacles and switches
(5) GFI
(50) Wall mounted J boxes with 1/2" stub into ceiling cavity
(2) 110-V exterior weather proof receptacles in use

HVAC:

(4) CRV-Commercial or Classroom Ventilator
(0-50% outside air)
(4) 4 Ton wall mounted Bard units with 10kw heat,
R410A
(4) Programmable thermostats, Heat/Cool/Auto
in locking T-stat cover; installed close to corner to
leave space for Smart Boards
Ceiling supply and return air ducted T bar
(4) Smokestats
(11) Power vents, Broan # 505 ceiling fan
(8" vertical discharge, 189 CFM, 6.5 sones)
Exterior duct chase wall

Exterior:

Dow house wrap
7/16" OSB sheathing
8" Sierra Hardipanel siding with battens over seams
3/4" Hardi trim, 12" top & bottom trim, 8" trim at mansard
and bottom, 4" trim around windows & doors
G style mansard to accommodate roof drain system
(16) 36" x 80" Vertical slide windows, in white
aluminum frame with clear insulated glass, DP 55.
(16) 1" aluminum mini blinds
(7) 36 x 80 Steel doors in steel jamb with 6 x 27
wire mesh view block, closers
(7) Exterior lever locks, Best 73K Classroom Grade 2
(7) Deadbolts, Best 83T 7 K STK 626

Misc:

(7) Fire extinguisher cabinets with 10# ABC fire
extinguisher

Contact Bill

713-880-2801

www.buildingpro.com

Bill@buildingpro.com

BUILDING

PROTM

RESOURCE BUILDING

General Specifications

28' x 60' modular classroom building
(2) 13' 8" x 60' (box sizes)
1,640 square feet
Educational Occupancy
International Building Code
Louisiana decal, 3rd party inspection
Fire Marshal approvals
Floor Load: 50#
Wind Speed: 140 MPH
Roof Load: 20#



Frame:

(10) Brake axles, 6000#
12' Perimeter frame steel floor system with
8" cross members
B deck
Removable hitches

Floor:

3/4" Tongue & groove plywood sub floor
R 19 Unfaced insulation
Naturelle Luxury Vinyl Plank (10 yr. warranty)
6" Vinyl base molding in restrooms
4" Vinyl base molding in classrooms
Standard bottom board

Walls:

2" x 4" x 9'3"; 9 foot finished ceiling height
173 Linear feet of interior walls
Walls to underside of roof decking
5/8" x 4 x 12 Type X, tape & mud in factory; sand & paint on site
5/8" x 4 x 12 Type X moisture resistant in restrooms, tape & mud in factory; sand & paint on site
(7) 36 x 80 pre finished, Imperial Oak solid core (20 minute) doors in 18 gauge Rediframe
(1) Best Grade 2 (73K) Passage levers
(2) Best Grade 2 (73K) Privacy lever locks
(4) Best Grade 2 (73K) Keyed levers
(7) Standard Dorma 641 PA door closers
R-13 Kraft insulation
R-11 Unfaced interior wall insulation
Paint grade molding on windows

Roof:

Transverse roof trusses, 2 x 8, 16" on center,
23 foot span, no overhangs
R-30 Unfaced insulation
FR Class C 7/16" OSB roof decking
45 mil white EPDM roof with 12" rubber roof cap
2 x 4 T grid ceiling
Tie Downs

Plumbing:

(1) 4 gallon electric water heater, wall mounted
(2) ADA commodes, flush valve, grab bars at 36" AFF
(3) Wall hung lavatories
PEX supply piping with cut offs
PVC waste piping, stubbed through the floor
Ice maker box hook up
(2) Floor drains, 4" with trap primer
(1) 22" x 25" Stainless steel sink with wrist blade faucet
(1) Wall mount hi/lo water cooler
(2) Frost proof exterior hose bibb
(1) Mop sink, 24 x 24 with legs
(2) Bobrick, toilet tissue dispensers, double roll, B 2888, stainless steel
(2) Bobrick paper towel dispensers, B-262., stainless steel
(2) Bobrick liquid soap dispenser, B-2111, stainless steel
(2) Bobrick, 18 x 30 stainless steel framed mirrors, B166

Cabinets:

6 LF Wilsonart brand, base cabinets and doors with Wilsonart counter roll tops
6 LF Wilsonart overhead cabinets

Electrical:

(2) 150 AMP load centers, single phase
A/C cable raceway
(25) T-grid, fluorescent light fixtures
(2) Exit signs with battery back up
(1) Exit/Emergency light combo with battery back up
(1) Porch lights, Lithonia MH wall pack
Standard receptacles and switches
(5) GFI
(20) Wall mounted J boxes with 1/2" stub into ceiling cavity
(1) 110-V exterior weather proof receptacles in use
(1) 110-V dedicated receptacle

HVAC:

(2) CRV-Commercial or Classroom Ventilator (0-50% outside air)
(2) 3 Ton wall mounted Bard units with 10kw heat, R410A
(2) Programmable thermostats, Heat/Cool/Auto in locking T-stat cover
Ceiling supply and return air ducted
(4) Power vents, V-2262 ceiling fan
Exterior duct chase wall

Exterior:

Dow house wrap
5/8" CDX sheathing
8" Sierra Hardipanel siding with battens over seams
3/4" Hardi trim, 12" top & bottom, 8" at mansard and bottom of building, 4" trim around windows and doors
36" False mansard
(8) 36" x 80" Vertical slide windows, in white aluminum frame with clear insulated glass, DP 55.
(8) 1" aluminum mini blinds
(2) 36 x 80 Steel doors in steel jamb with 6 x 27 wire mesh view block, closer
(2) Panic hardware, Hager 4701 with exterior pull and Best Cylinder

Misc:

(1) Fire extinguisher cabinet with 10# ABC fire extinguisher

Contact Bill

713-880-2801

www.buildingpro.com

Bill@buildingpro.com